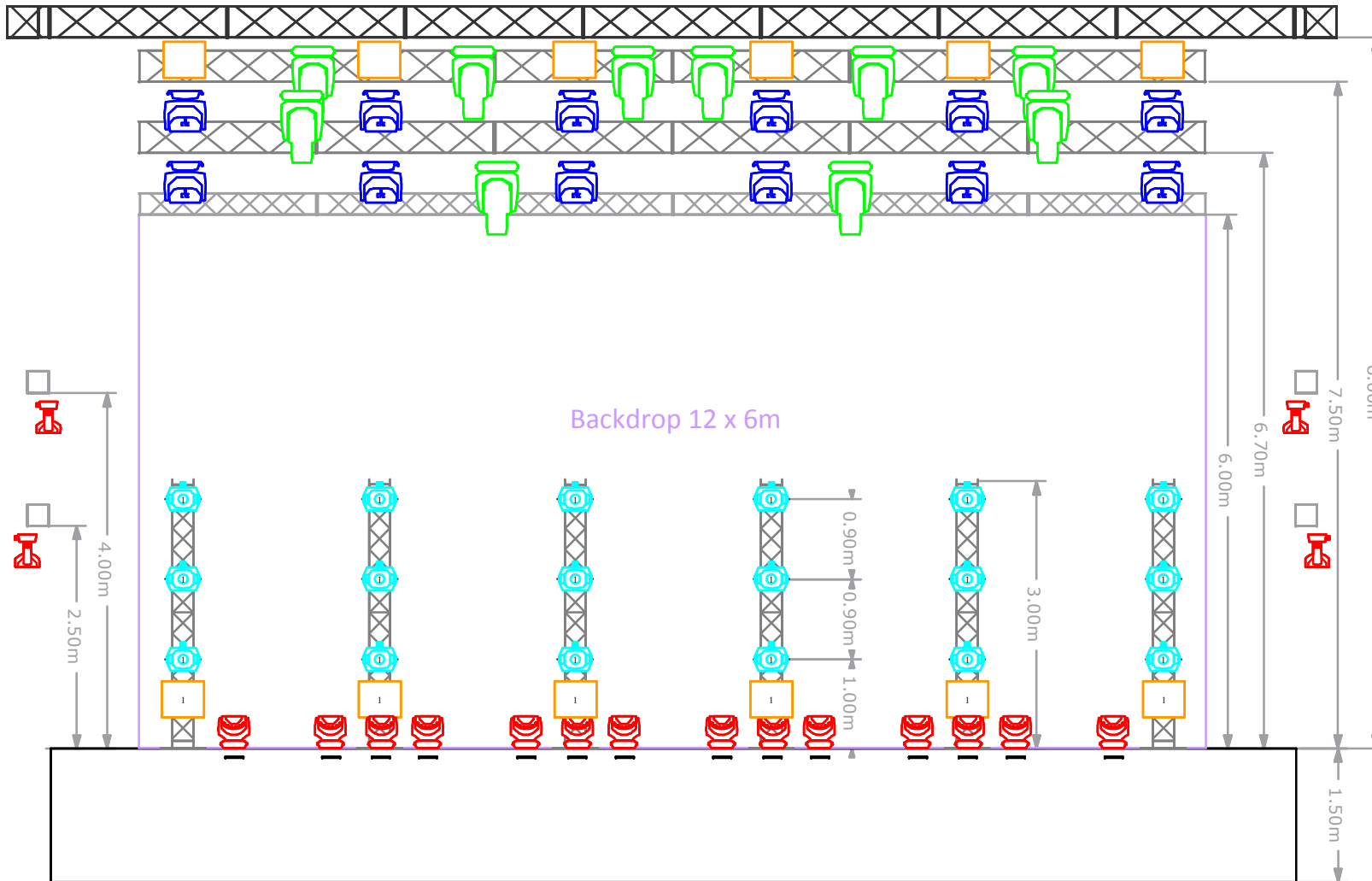


Front View

**"Son of Analog" Plener 2016"**



DP

Symbol	Name	Count
	VL 3000 Spot	10
	Aleda K20 B-EYE	12
	Robin Pointe	18
	Robin LEDWash 800	22
	4-Lite Blinder	12

**Fixt Modes & Notes**

- B-Eye K20 - Mode Shape
- Led Wash 800 - Mode 5
- Pointe - Mode 1
- 4-Lite blinders on separate channels

**Control**

- Grand MA2 full size
- NPU

**FX**

- 2 x MDG ATMe + fans
- 2 x MDG Max + fans



**Dawid Podsiadło & HEKO**

Show :	"Son of Analog" Plener
Date :	May-September 2016
Client :	MUZK Management
Venue :	Poland
Design by :	Pawel "Spider" Pająk
E-mail :	<a href="mailto:spider@fish-eye.org">spider@fish-eye.org</a>
Mobile :	0048 608044172
Drawn by :	Fish Eye
Revised :	15.03.2016
Version :	Ver_3.0

This document remains a property of Fish Eye.

### "Son of Analog" Plener 2016



DP

Symbol	Name	Count
	VL 3000 Spot	10
	Aleda K20 B-EYE	12
	Robin Pointe	18
	Robin LEDWash 800	22
	4-Lite Blinder	12

**Fixt Modes & Notes**

- B-Eye K20 - Mode Shape
- Led Wash 800 - Mode 5
- Pointe - Mode 1
- 4-Lite blinders on separate channels

**Control**

- Grand MA2 full size
- NPU

**FX**

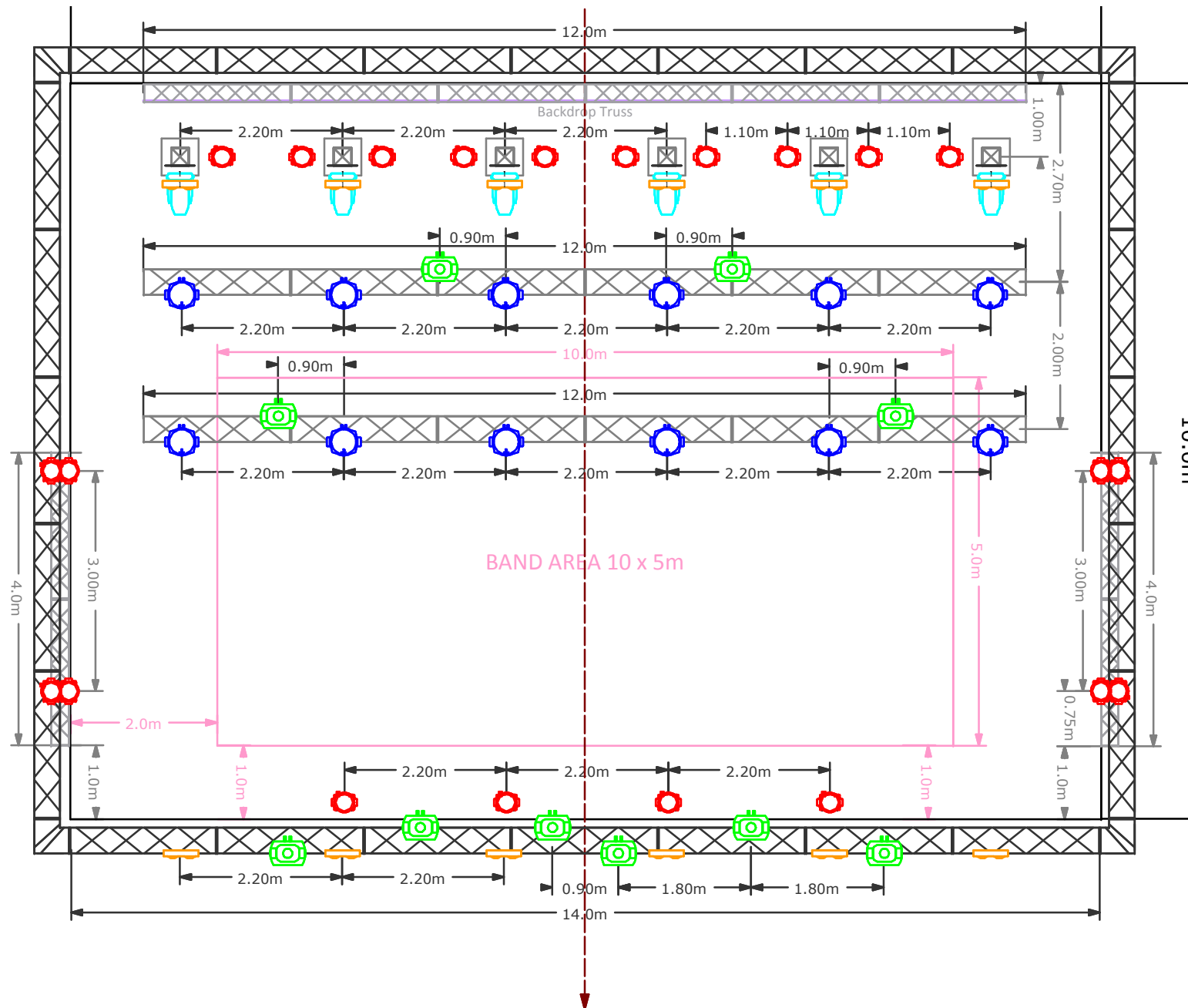
- 2 x MDG ATMe + fans
- 2 x MDG Max + fans



**David Podsiadło & HEKO**

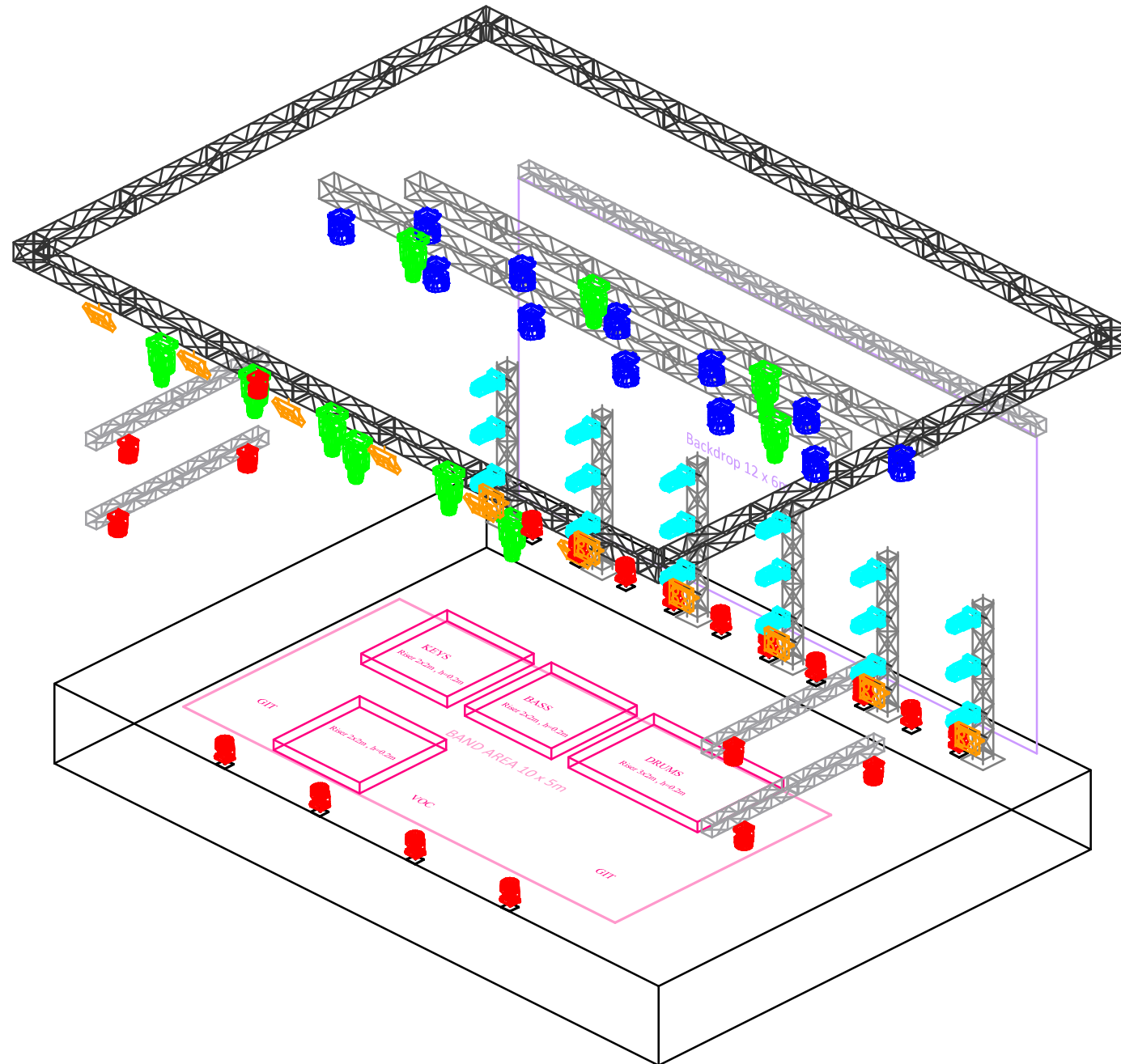
Show :	"Son of Analog" Plener
Date :	May-September 2016
Client :	MUZK Management
Venue :	Poland
Design by :	Pawel "Spider" Pajak
E-mail :	<a href="mailto:spider@fish-eye.org">spider@fish-eye.org</a>
Mobile :	0048 608044172
Drawn by :	Fish Eye
Revised :	15.03.2016
Version :	Ver._3.0

This document remains a property of Fish Eye.



Iso View

## "Son of Analog" Plener 2016"



DP

Symbol	Name	Count
	VL 3000 Spot	10
	Aleda K20 B-EYE	12
	Robin Pointe	18
	Robin LEDWash 800	22
	4-Lite Blinder	12

### Fixt Modes & Notes

- B-Eye K20 - Mode Shape
- Led Wash 800 - Mode 5
- Pointe - Mode 1
- 4-Lite blinders on separate channels

### Control

- Grand MA2 full size
- NPU

### FX

- 2 x MDG ATMe + fans
- 2 x MDG Max + fans



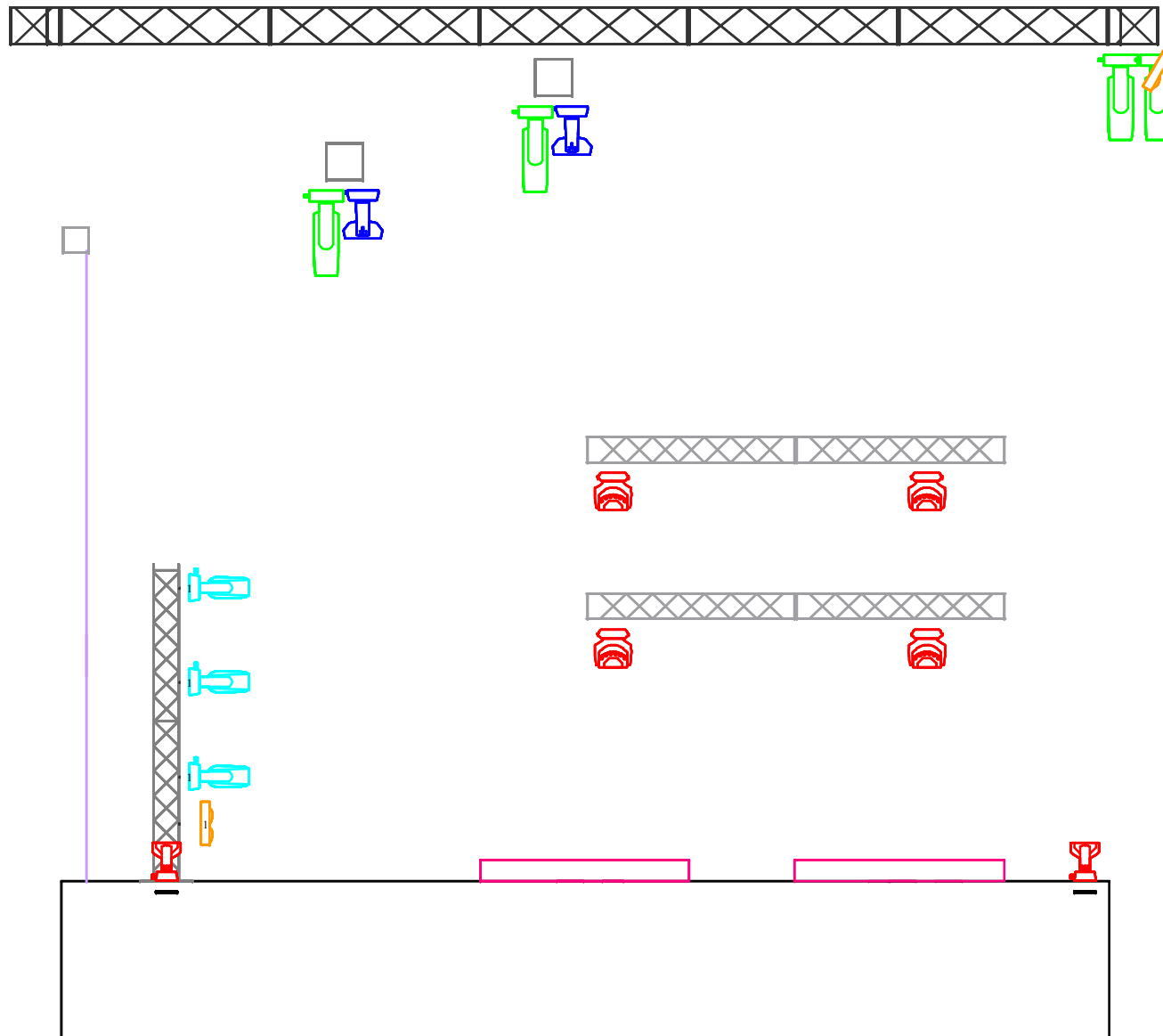
### Dawid Podsiadło & HEKO

Show :	"Son of Analog" Plener
Date :	May-September 2016
Client :	MUZK Management
Venue :	Poland
Design by :	Paweł "Spider" Pająk
E-mail :	<a href="mailto:spider@fish-eye.org">spider@fish-eye.org</a>
Mobile :	0048 608044172
Drawn by :	Fish Eye
Revised :	15.03.2016
Version :	Ver_3.0

This document remains a property of Fish Eye.

Left View

**"Son of Analog" Plener 2016"**



DP

Symbol	Name	Count
	VL 3000 Spot	10
	Aleda K20 B-EYE	12
	Robin Pointe	18
	Robin LEDWash 800	22
	4-Lite Blinder	12

**Fixt Modes & Notes**

- B-Eye K20 - Mode Shape
- Led Wash 800 - Mode 5
- Pointe - Mode 1
- 4-Lite blinders on separate channels

**Control**

- Grand MA2 full size
- NPU

**FX**

- 2 x MDG ATMe + fans
- 2 x MDG Max + fans

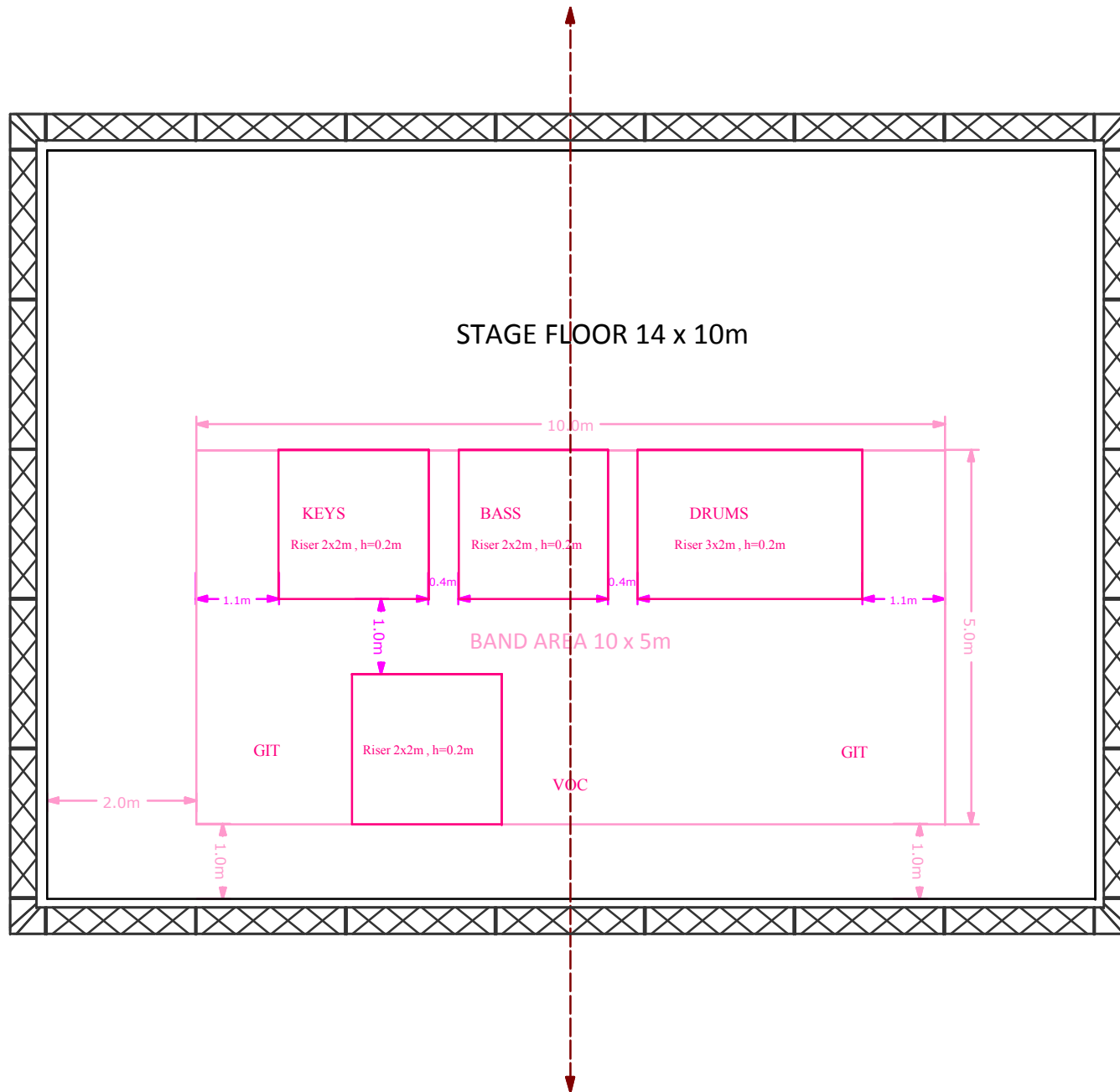


**David Podsiadło & HEKO**

Show :	"Son of Analog" Plener
Date :	May-September 2016
Client :	MUZK Management
Venue :	Poland
Design by :	Pawel "Spider" Pająk
E-mail :	<a href="mailto:spider@fish-eye.org">spider@fish-eye.org</a>
Mobile :	0048 608044172
Drawn by :	Fish Eye
Revised :	15.03.2016
Version :	Ver_3.0

This document remains a property of Fish Eye.

**"Son of Analog" Plener 2016"**



Riser Set Up



**Dawid Podsiadło & HEKO**

Show :	"Son of Analog" Plener
Date :	May-September 2016
Client :	MUZK Management
Venue :	Poland
Design by :	Pawel "Spider" Pająk
E-mail :	<a href="mailto:spider@fish-eye.org">spider@fish-eye.org</a>
Mobile :	0048 608044172
Drawn by :	Fish Eye
Revised :	15.03.2016
Version :	Ver_3.0

This document remains a property of Fish Eye.